

# EAST CROSS CREEK AQUATIC RESOURCES MANAGEMENT PLAN

TERMS OF REFERENCE



**KAWARTHA CONSERVATION**

May 2008



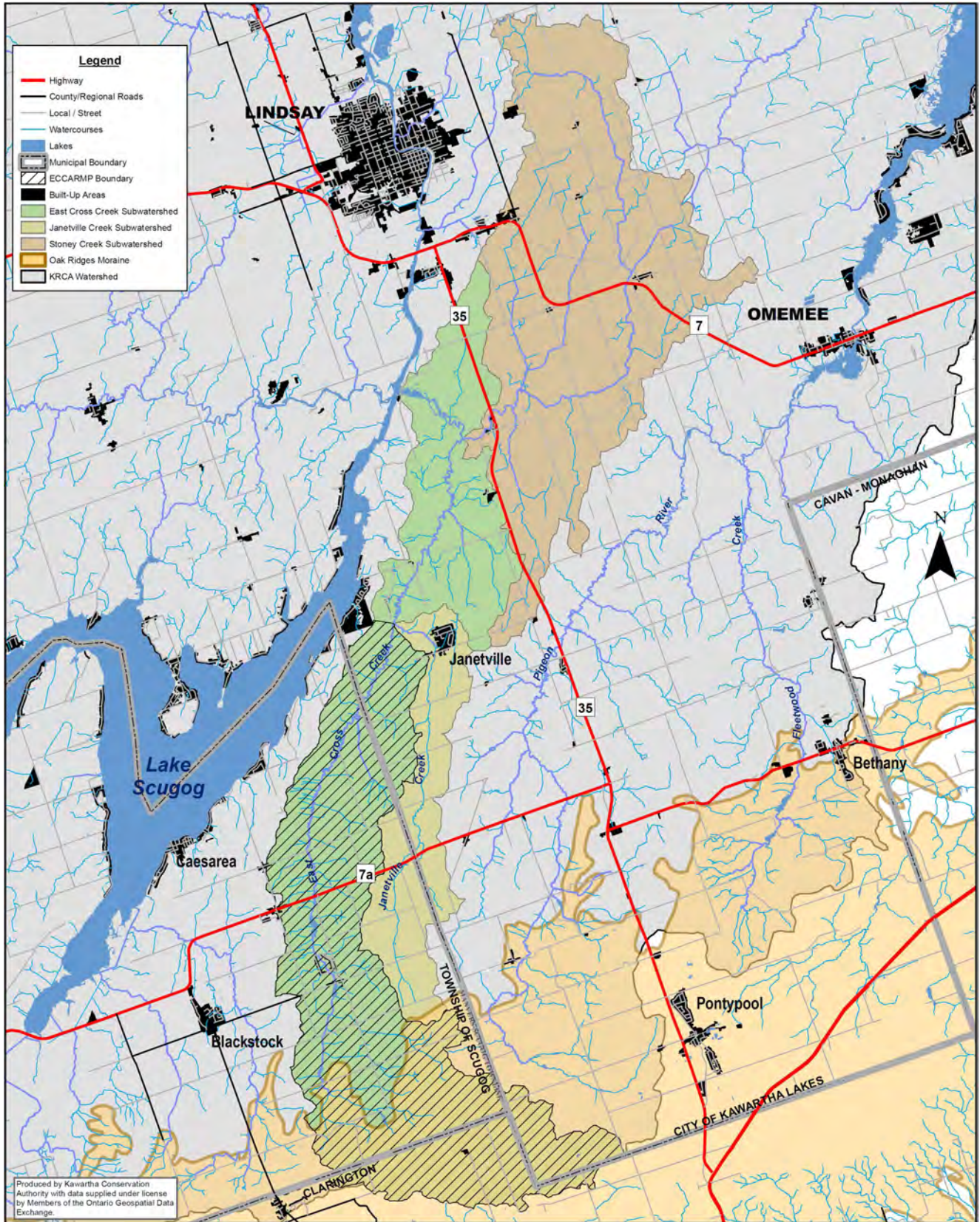


Figure 1: Planning area (shaded) within East Cross Creek watershed.

## **Introduction:**

Rural and urban land use has the potential to negatively impact water quality and biological health within watersheds. The assessment and monitoring of stream health can provide necessary information to ensure that future development within watersheds can be planned in a sustainable manner. Private landowners, resource agencies and other organizations are ultimately responsible for the stewardship of local ecosystems and benefit from the creation of a management plan to guide future actions and land uses within their watershed. This Aquatic Resources Management Plan will provide a framework for communities to work collectively toward a common vision for East Cross Creek.

The economic impact that anglers and other outdoor enthusiasts have on the local economy is very substantial. In 2005, direct recreational fishing expenditures in Ontario, made by all active anglers, amounted to over 1 billion dollars (DFO, 2007). East Cross Creek is a major tributary of the Scugog River and supports the highly sought after game fishes established in the area. The protection of the aquatic environment sustains water quality and the aesthetic values of the area, thereby increasing tourism, recreational activities, and property values.

The initiation of a resource management plan is usually carried out in response to one or more external pressures, such as public concern about environmental conditions in the watershed. The triggers that initiated the development of the East Cross Creek Aquatic Resources Management Plan (ECCARMP) include:

- Pressures on all aquatic resources due to increased and conflicting land uses.
- Information requirements for Municipal Planning department staff.
- The need to maintain recreational values and activities, tourism and property values within the Kawartha Lakes; a region that relies on aquatic health and abundant fish populations to support a significant portion of the economy.

## **Planning Area:**

The headwaters of East Cross Creek originate on the north slope of the Oak Ridges Moraine, draining lands within the Municipality of Clarington, City of Kawartha Lakes and Township of Scugog. These headwaters converge from the south and east to form a main channel that flows in a northward direction through the village of Cadmus. Passing slightly east of Nestleton Station the creek flows northeast, crossing into the City of Kawartha Lakes where it eventually receives waters from Janetville Creek and Stoney Creek before emptying into the Scugog River, downstream of Lake Scugog. The scope of the ECCARMP includes all lands and watercourses drained by East Cross Creek that exist upstream of its confluence with Janetville Creek (Figure 1).

## **Aim of the ECCARMP:**

The mandate of Kawartha Conservation is to establish and undertake programs to promote the conservation, restoration, development and management of natural resources in

partnership with local municipalities and the province. This Aquatic Resources Management Plan provides a framework to guide decision-making with respect to aquatic resource management in East Cross Creek. The overall aim of the ECCARMP is to:

- Report on the current and historical composition of aquatic resources within East Cross Creek and summarize watershed processes that influence them.
- Use a multi-stakeholder approach to develop management strategies to protect, restore and/or enhance the aquatic resources in East Cross Creek within the context of federal, provincial, municipal and regional policies and directives.
- Collaborate with landowners, resources agencies and stakeholders to implement the management strategies outlined in the plan.

### **Background Information Gathering:**

Initial efforts will focus on the evaluation of historical and current conditions within the watershed to gain insight as to how they exist at present, or have changed over time. This information may include: fish assemblages, fish habitat, climate, water temperature, land use, geology, physiography, human settlement, water chemistry, hydrology, stream morphology, benthic macroinvertebrates, in-stream barriers, or any other known factor that could influence the aquatic resources within East Cross Creek. These data will be summarized in a background report.

### **Stakeholder Consultation:**

The need for a multi-stakeholder approach in the formation of the ECCARMP is crucial to the success of the plan. A Technical Steering Committee will be established to guide the development of the plan in keeping consistent with the vision and goals. This committee will be comprised of stakeholders that can provide meaningful input throughout the plan development process. In developing management strategies, the concerns and needs of landowners and resource users will be considered as well. Efforts to obtain this input will be provided through: information sessions, open houses, questionnaire distribution, KRCA website and direct communication.

### **Development of ECCARMP Document:**

Once the relevant background information has been evaluated and stakeholders have provided input throughout the initial planning process, the ECCARMP will be drafted. This document will incorporate the knowledge and concerns with respect to the aquatic resources within the study area to guide management efforts into the future.

The management efforts should focus on a broad, watershed-wide approach, as well as a finer, management zone or site-specific approach. For efficient management purposes, areas

within the watershed can be divided into distinct zones, based on watershed characteristics that are unique to that specific area. Unique zone delineation could be based on: fish communities, sub-catchments, stream reaches, geological landforms, development pressures, land use patterns, or a combination of these and/or other unique characteristics.

### **Implementation:**

The last, but the most fundamental component of the ECCARMP is the implementation process. The implementation of the plan will bring various partners together to share their resources, expertise and abilities to address the management recommendations in the plan. These partners will collectively form an Implementation Committee and will likely be comprised of individuals who are also involved in other resource management initiatives undertaken by KRCA within the Lake Scugog watershed. The role of the Implementation Committee will be to support fundraising initiatives and secure resources to meet the deliverables outlined within the management strategies in the ECCARMP.

### **Roles and Responsibilities of Technical Steering Committee Members:**

#### *Kawartha Conservation:*

- Write terms of reference, background report and ECCARMP; develop management recommendations, organize information sessions and committee meetings; obtain public input; lead implementation efforts; plan review; plan endorsement.

#### *Regional Municipality of Durham:*

- Provide advice on municipal land use planning and Official Plans; assist in developing management recommendations; plan review; plan endorsement.

#### *Fisheries and Oceans Canada:*

- Provide advice on federal fisheries management policy; assist in developing management recommendations; plan review; plan endorsement.

#### *Ontario Ministry of Natural Resources:*

- Provide advice on provincial fisheries management policy; assist in developing management recommendations; plan review; plan endorsement.

### **References:**

DFO (Fisheries and Oceans Canada). 2007. Survey of Recreational Fishing in Canada, 2005. Available at: [http://www.dfo-mpo.gc.ca/communic/statistics/recreational/canada/2005/REC2005\\_EN\\_20070727.pdf](http://www.dfo-mpo.gc.ca/communic/statistics/recreational/canada/2005/REC2005_EN_20070727.pdf). Accessed May 5, 2008.

